



TITAN®

OPERATING MANUAL

- EN -	OPERATING MANUAL	2
- F -	MODE D'EMPLOI	12
- ES -	INSTRUCCIONES DE USO	22

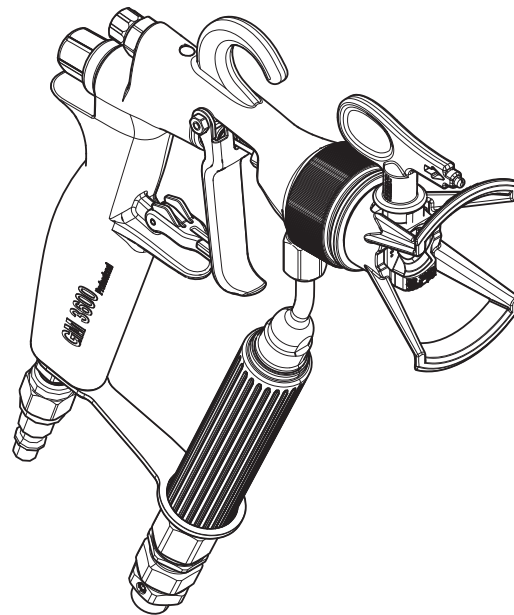
GM 3600™

AIR ASSISTED / AIRLESS
SPRAY GUN

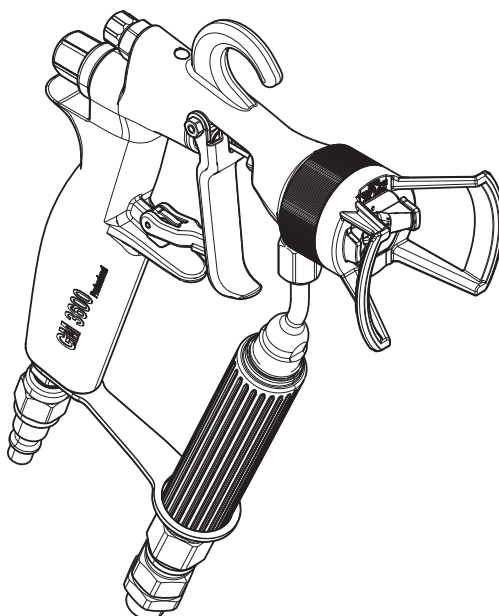
PISTOLET DE PNEUMATIQUE /
SANS AIR

PISTOLA PULVERIZADORA AIRE
ASISTADA / SIN AIR

MODEL 2404548



MODEL 2412194



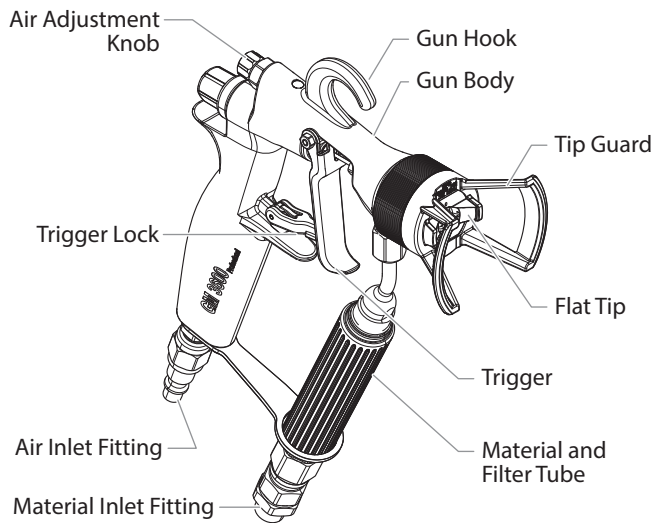
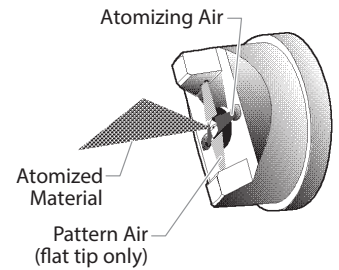
MODELS:

2404548

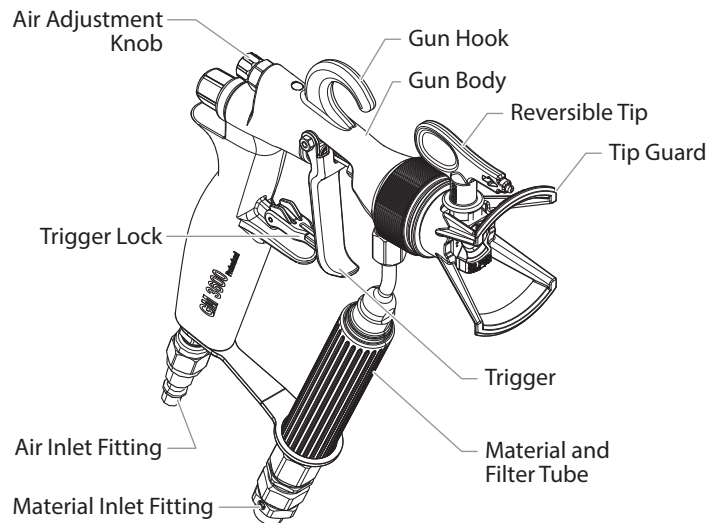
2412194

2 INTRODUCTION

In the air assisted/airless spraying process, the spraying material is atomized at pressures between 400 – 1800 PSI (3 – 12.4 MPa). The atomizing air at 7 – 32 PSI (0 – 0.22 MPa) produces a soft spray jet that eliminates problems of overlaps in the boundary zone. The soft spray jet prevents the spraying material from rebounding to the gun. The form air reduces or increases the spray jet width, depending on the adjustment of the air adjustment knob. Due to the cleaning-friendly design of the tip and the lack of air holes near the material outlet, the tip is virtually self-cleaning. When the trigger of the gun is pulled, the air valve opens allowing atomizing and fan jet air to flow up to the tip. The material valve opens only when the trigger is pulled to its fullest extent. The amount of air for the spray jet width is adjusted using the air adjustment knob. The air input should be adjusted at the source to approximately 0 – 32 PSI (0 – 0.22 MPa).



Model 2412194



Model 2404548

ADVANTAGES OF THE ADJUSTABLE AIR ASSISTED/ AIRLESS PROCESS:

- high coverage capability
- low overspray
- fine finish
- adjustability of spray pattern width

MATERIALS THAT CAN BE SPRAYED USING THIS GUN INCLUDE:

- Water, oil, and solvent based primers and topcoats
- Fine finishing enamels and automotive coatings
- Release agents

2.1 TECHNICAL DATA

Maximum air input pressure	115 PSI (0.79 MPa)
Maximum working pressure	3600 PSI (24.8 MPa)
Air connector	QD Nipple
Material connector	NPSM 1/4"
Filter, standard	100 mesh (see chart on page 11 for available filter sizes)
Length	8.5" (216 mm)
Height	9.8" (250 mm)
Weight	1 lb. (420 g)
Reversible Tip Spray Gun	P/N 2404548
Flat Tip Spray Gun	P/N 2412194

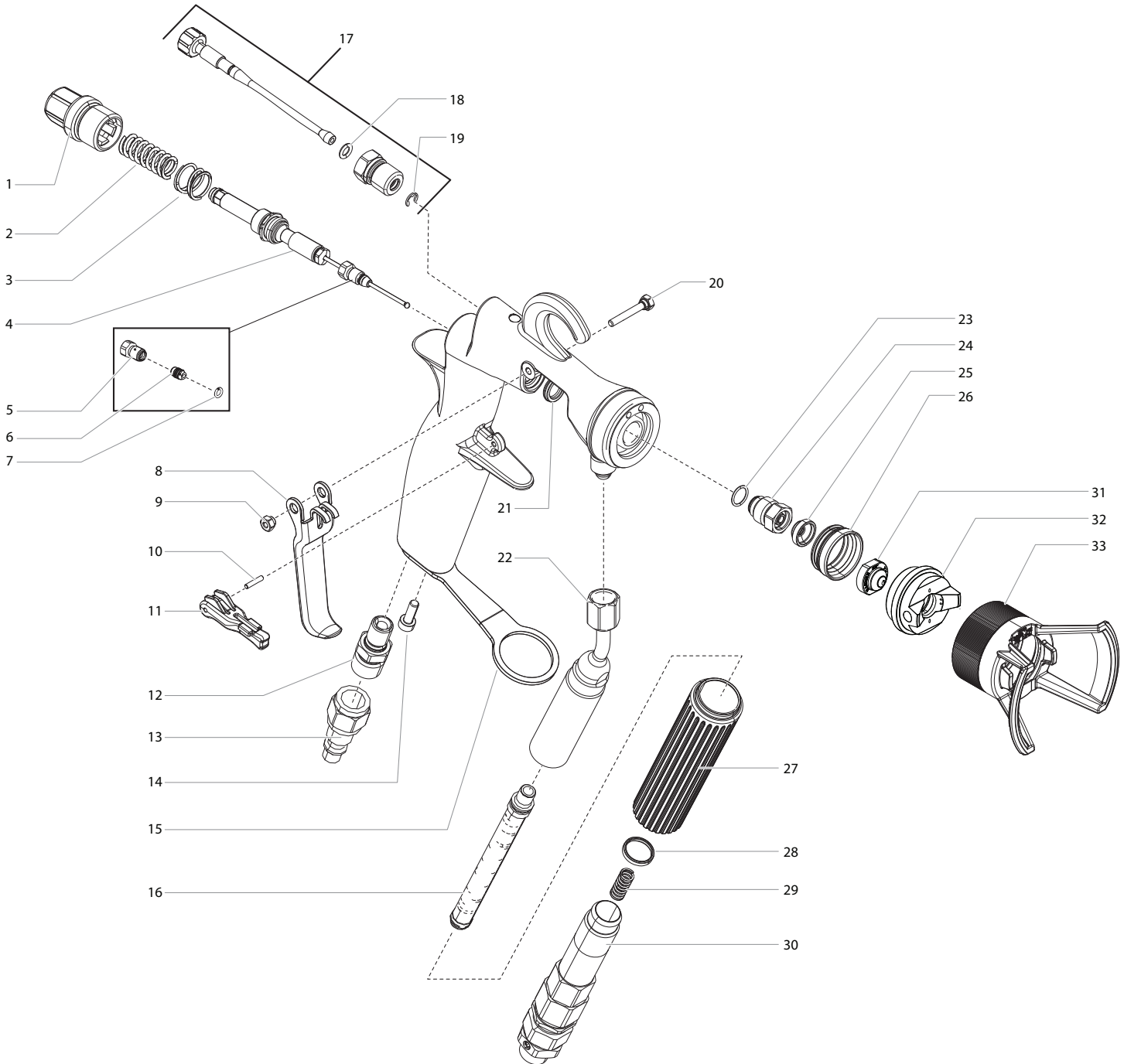
CUADRO DE PIEZAS DE RECAMBIO

EN FLAT TIP SPRAY GUN

F PISTOLET À BUSE PLATE

ES PISTOLA ROCIADORA CON BOQUILLA FIJA

P/N 2412194



#	GM 3600	English Description	Français Description	Español Descripción	Qty. Qte. Cant.
1	286480	Rear cap	Obturateur arrière	Tapón posterior	1
2	9894283	Spring	Ressort	Resorte	1
3	9894282	Spring	Ressort	Resorte	1
4	2311320	Gun packing kit (includes items 5-7)	Trousse de garniture d'étanchéité du pistolet (comprend les pièces 5 à 7)	Kit de empaquetadura de la pistola (incluye elementos 5 a 7)	1
5	286471	Fitting	Raccord	Conector	1
6	286472	Gasket	Joint	Junta	1
7	286473	O-ring	Joint torique	Junta torico	1
8	286476	Trigger	Détente	Gatillo	1
9	286484	Nut	Écrou	Tuerca	1
10	9832127	Pin	Goupille	Pasador	1
11	286474	Trigger lock	Verrou de détente	Seguro del gatillo	1
12	394612	Fitting	Raccord	Conector	1
13	508422	Air fitting	Raccord d'air	Conector de aire	1
14	9805405	Screw	Vis	Tornillo	1
15	286475	Support bracket	Support	Soporte de apoyo	1
16	089959	Filter, 100 mesh, yellow	Filtre, 100 mailles, jaune	Filtro, malla 100, amarillo	1
17	2369296	Air valve assembly (includes item 18-19)	Ensemble de soupape d'air (comprend les pièces 18-19)	Conjunto de válvula de aire (incluye los elementos 18-19)	1
18	286491	O-ring	Joint torique	Junta torico	1
19	9822555	Clip	Agrafe	Sujetador	1
20	286483	Screw	Vis	Tornillo	1
21	286481	Seal	Joint d'étanchéité	Sello	1
22	286238	Filter housing	Logement de filtre	Alojamiento del filtro	1
23	286462	O-ring	Joint torique	Junta torico	1
24	286233	Valve seat housing	Logement de siège de soupape	Alojamiento de asiento de válvula	1
25	286479	Seal	Joint d'étanchéité	Sello	1
26	286478	Tip gasket	Joint de buse	Junta de boquilla	1
27	286492	Filter body	Corps du filtre	Cuerpo del filtro	1
28	286490	Seal	Joint d'étanchéité	Sello	1
29	043590	Spring	Ressort	Resorte	1
30	538205	Swivel fitting	Raccord pivotant	Conector giratorio	1
31	526209	AirCoat tip ACF 9/20 (see page 36 for Flat Tip Chart)	Buse à jet porté ACF 9/20 (voir le Tableau des buses plates à la page 36)	Boquilla AirCoat ACF 9/20 (consulte la Tabla de Boquillas Fijas en la página 36)	1
32	394960	Air cap	Bouchon d'air	Tapa de aire	1
33	394962	Tip guard	Protecteur de buse	Cubierta de la boquilla	1
	394965	Tip guard with air cap (includes item 32)	Protecteur de buse avec bouchon d'air (comprend l'article 32)	Cubierta de la boquilla con tapa de aire (incluye la articulo 32)	1

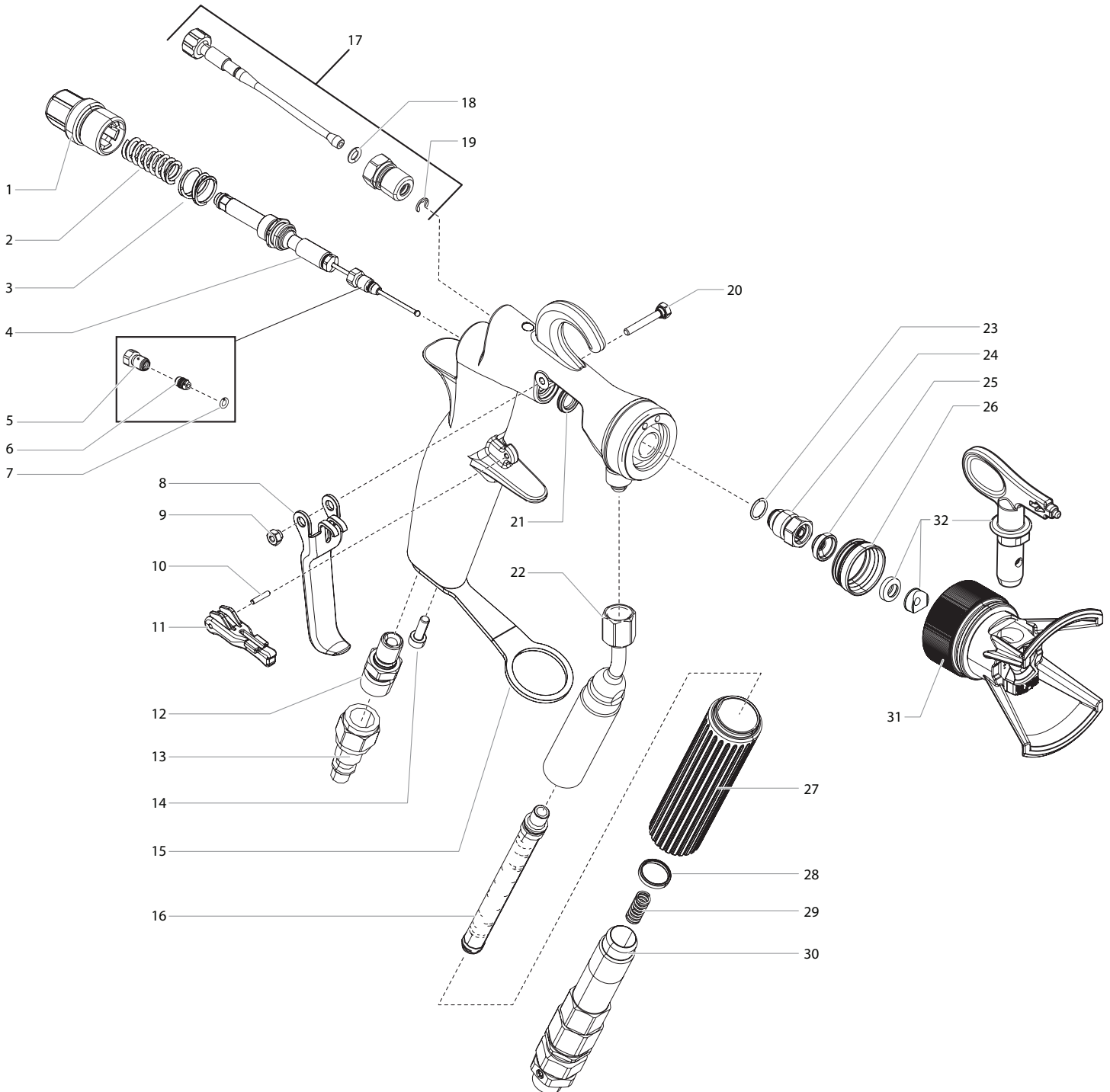
CUADRO DE PIEZAS DE RECAMBIO

EN REVERSIBLE TIP SPRAY GUN

F PISTOLET À BUSE RÉVERSIBLE

ES PISTOLA ROCIADORA CON BOQUILLA REVERSIBLE

P/N 2404548



#	GM 3600	English Description	Français Description	Español Descripción	Qty. Qte. Cant.
1	286480	Rear cap	Obturateur arrière	Tapón posterior	1
2	9894283	Spring	Ressort	Resorte	1
3	9894282	Spring	Ressort	Resorte	1
4	2301252	Gun packing kit (includes items 5-7)	Trousse de garniture d'étanchéité du pistolet (comprend les pièces 5 à 7)	Kit de empaquetadura de la pistola (incluye elementos 5 a 7)	1
5	286471	Fitting	Raccord	Conector	1
6	286472	Gasket	Joint	Junta	1
7	286473	O-ring	Joint torique	Junta torico	1
8	286476	Trigger	Détente	Gatillo	1
9	286484	Nut	Écrou	Tuerca	1
10	9832127	Pin	Goupille	Pasador	1
11	286474	Trigger lock	Verrou de détente	Seguro del gatillo	1
12	349612	Fitting	Raccord	Conector	1
13	508422	Air fitting	Raccord d'air	Conector de aire	1
14	9805405	Screw	Vis	Tornillo	1
15	286475	Support bracket	Support	Soporte de apoyo	1
16	089959	Filter, 100 mesh, yellow	Filtre, 100 mailles, jaune	Filtro, malla 100, amarillo	1
17	2369296	Air valve assembly (includes item 18-19)	Ensemble de soupape d'air (comprend les pièces 18-19)	Conjunto de válvula de aire (incluye los elementos 18-19)	1
18	286491	O-ring	Joint torique	Junta torico	1
19	9822555	Clip	Agrafe	Sujetador	1
20	286483	Screw	Vis	Tornillo	1
21	286481	Seal	Joint d'étanchéité	Sello	1
22	286238	Filter housing	Logement de filtre	Alojamiento del filtro	1
23	286462	O-ring	Joint torique	Junta torico	1
24	286233	Valve seat housing	Logement de siège de soupape	Alojamiento de asiento de válvula	1
25	286479	Seal	Joint d'étanchéité	Sello	1
26	286478	Tip gasket	Joint de buse	Junta de boquilla	1
27	286492	Filter body	Corps du filtre	Cuerpo del filtro	1
28	286490	Seal	Joint d'étanchéité	Sello	1
29	043590	Spring	Ressort	Resorte	1
30	538205	Swivel fitting	Raccord pivotant	Conector giratorio	1
31	394965	Tip guard	Protecteur de buse	Cubierta de la boquilla	1
32	695-415	Spray tip, TR-1 415 (sold separately; see page 37 for complete Titan tip listings)	Buse de pistolet, TR-1 415 (vendu séparément; voir la liste des buses réversibles de Titan à la page 37)	Boquilla rociadora, TR-1 415 (se vende por separado; consulte la lista de boquillas reversibles de Titan en la página 37)	1

CUADRO DE PIEZAS DE RECAMBIO

EN FLAT TIP CHART

F TABLEAU DES BUSES PLATES

ES TABLA DE BOQUILLAS FIJAS

Part Number	Designation	Orifice Diameter (in.)	Angle	Recommended Filter
0526209	9/20	0.009	20	180 Mesh Filter (red)
0526409	9/40	0.009	40	
0526111	11/10	0.011	10	100 Mesh Filter (yellow)
0526211	11/20	0.011	20	
0526411	11/40	0.011	40	
0526113	13/10	0.013	10	
0526213	13/20	0.013	20	50 Mesh Filter (white)
0526413	13/40	0.013	40	
0526115	15/10	0.015	10	
0526215	15/20	0.015	20	
0526415	15/40	0.015	40	
0526217	17/20	0.017	20	
0526417	17/40	0.017	40	

No de pièce	Désignation	Diamètre de l'orifice (in.)	Angle	Filtre recommandé
0526209	9/20	0.009	20	Filtre, 180 mailles (rouge)
0526409	9/40	0.009	40	
0526111	11/10	0.011	10	Filtre, 100 mailles (jaune)
0526211	11/20	0.011	20	
0526411	11/40	0.011	40	
0526113	13/10	0.013	10	
0526213	13/20	0.013	20	Filtre, 50 mailles (blanc)
0526413	13/40	0.013	40	
0526115	15/10	0.015	10	
0526215	15/20	0.015	20	
0526415	15/40	0.015	40	
0526217	17/20	0.017	20	
0526417	17/40	0.017	40	

Número de Pieza	Designación	Diámetro del Orificio (in.)	Ángulo	Filtro Recomendado
0526209	9/20	0.009	20	Filtro de Malla 180 (rojo)
0526409	9/40	0.009	40	
0526111	11/10	0.011	10	Filtro de Malla 100 (amarillo)
0526211	11/20	0.011	20	
0526411	11/40	0.011	40	
0526113	13/10	0.013	10	
0526213	13/20	0.013	20	Filtro de Malla 50 (blanco)
0526413	13/40	0.013	40	
0526115	15/10	0.015	10	
0526215	15/20	0.015	20	
0526415	15/40	0.015	40	
0526217	17/20	0.017	20	
0526417	17/40	0.017	40	